

Explanation of Functions

Comfortable Airflow



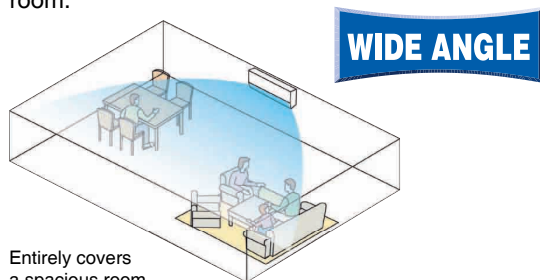
Comfortable Mode (Draft-prevention operation)

The new flap changes the delivery angle to horizontal for cooling operation and downward vertical for heating operation to prevent cold or warm air from blowing directly on the body.



Wide-Angle Louvres

The smoothly curved Wide-Angle Louvres provide wide airflow coverage for effective cooling/heating no matter where the indoor unit is placed in the room.



Entirely covers a spacious room



Vertical Auto-Swing (up and down)

Vertical Auto-Swing automatically moves the flaps up and down to distribute air throughout the room.



Horizontal Auto-Swing (left and right)

Horizontal Auto-Swing automatically moves the louvres to the left and right to cover the room with cool/warm air.



3-D Airflow

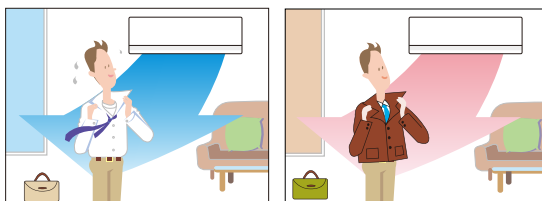
This function combines Vertical and Horizontal Auto-Swing to circulate a stream of cool/warm air right to the corners of even large spaces.

Lifestyle Convenience



Inverter Powerful Operation

This function is convenient for boosting cooling/heating performance for a 20-minute period both when you first turn on your air conditioner or want to quickly change the room temperature.



Indoor Unit On/Off Switch

There is a second On/Off switch on the indoor unit to prevent any problems if the wireless remote controller is misplaced.

Comfort Control



Indoor Unit Quiet Operation

Indoor unit operating sound levels can be decreased by 3 dB from the low setting fan speed using the wireless remote controller.



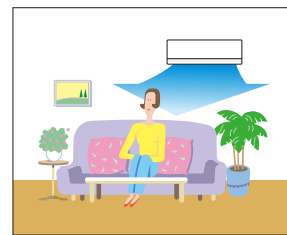
Outdoor Unit Quiet Operation

Outdoor unit operating sound levels can be decreased by 3 dB from the rated operating sound using the wireless remote controller.

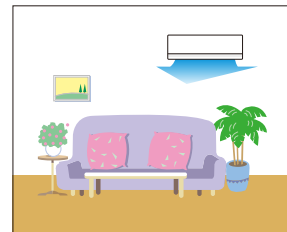


Intelligent Eye

Intelligent Eye with its infrared sensor automatically controls air conditioner operation according to human movement in the room. When there is no movement, it adjusts the temperature by 2°C, resulting in energy savings of up to 20% for cooling operation and 30% for heating operation.



When you are in the room, the air conditioner maintains the set temperature.



If Intelligent Eye detects no human movement for 20 minutes, it automatically adjusts the set temperature by 2 °C.



When you enter the room, Intelligent Eye automatically returns the temperature to the set level.



Automatic Operation

This function automatically selects cooling or heating operation mode based on the room temperature at startup.



Programme Dry Function

This function automatically reduces the level of humidity while maintaining the preset room temperature.



Auto Fan Speed

The microprocessor automatically controls fan speed to adjust the room temperature to the set temperature.

Cleanliness



Titanium Apatite Photocatalytic Air-Purifying Filter

This filter combines the Air-Purifying Filter and Titanium Apatite Photocatalytic Deodorising Filter in a single highly effective unit. The filter traps microscopic particles, decomposes odours and even removes bacteria and viruses. It lasts for three years without replacement if washed about once every six months.

► See page 9



Mould-Proof Air Filter

The air filter is finished with a coating that suppresses the growth of mould on its surface.



Wipe-Clean Flat Panel

The flat panel models can be cleaned with only a single pass of a cloth across their smooth surface. The flat panel can also be easily removed for more thorough cleaning.

Timers



24-Hour On/Off Timer

The timer can be preset to start and stop at any time within a 24-hour period. The air conditioner is started/stopped simply by pressing the On/Off timer button on the wireless remote controller.



Night Set Mode

Pressing the Off timer button automatically selects the Night Set Mode. This function prevents any sudden change in room temperature by gently raising/lowering the temperature before the air conditioner stops, so you can sleep more comfortably.

Worry Free



Auto-Restart after Power Failure

The air conditioner memorises the settings for mode, airflow, temperature, etc., and automatically returns to them when power is restored after a power failure.



Self-Diagnosis with Digital Display

Malfunction codes are shown on the digital display panel of the wireless remote controller for fast and easy maintenance.



Anticorrosion Treatment of Outdoor Heat Exchanger Fin

The outdoor unit's heat exchanger fins are processed using a special anticorrosion treatment. The surface is covered with a thin acrylic resin layer to enhance the fins' resistance to acid rain and salt corrosion.

Others

Quick Warming Function

When outdoor temperatures are low, this function preheats the compressor to shorten the time required to discharge warm air.

Automatic Defrosting

Before starting heating operation, a sensor checks for frost in the outdoor unit and initiates automatic defrosting if necessary so that only warm air is discharged.

Hot-Start Function

After defrosting or when starting heating operation, air is preheated before discharge to prevent uncomfortable cold drafts.