

**Liberia**  
**East Nimba Nature Reserve Forest Conservation Project**  
**News from the Field**

February 2019  
Conservation International

**Patrols by Frontline Conservationists (FCs)**

In this quarter, 24 Frontline Conservationists (FCs) carried out a total of 230 patrols: 189 in the surrounding forests and 41 in the East Nimba Nature Reserve (ENNR). As a result of the patrols, the FCs reported 16 violations in the forests. Subsequent investigation by the Forest Development Authority showed that only the three cases reported in the ENNR were actual violations.

| Forest              | No. of patrols | Violations reported | Violation examples   |
|---------------------|----------------|---------------------|--|
| Surrounding forests | 189            | 13                  | <ul style="list-style-type: none"> <li>• Empty gun shell</li> <li>• Sale of walnuts in nearby market</li> <li>• Gun sound</li> </ul> |
| ENNR                | 41             | 3                   | <ul style="list-style-type: none"> <li>• Hunters' trail</li> <li>• Gun sound</li> </ul>  |
| Total               | 230            | 16                  |  |



FCs embark on a joint forest patrol

**Piggery and vegetable production**

Under the project and its conservation activities, piggery has been an important means of livelihood for villagers, who previously depended on bush meat for protein and for cash to support their families. The sale of four piglets in Yolowee and one adult pig in Gbobayee brought in income of \$217. This money was used to establish a savings and loan club in Yolowee and to purchase additional pig feed in Gbobayee.

| Community | No. of pigs sold | Income | Use of funds                           |
|-----------|------------------|--------|--|
| Gbobayee  | 1 (adult)        | \$67   | Purchase of pig feed                   |
| Yolowee   | 4 (piglets)      | \$150  | Establishment of savings and loan club |
| Total     | 5                | \$217  |  |

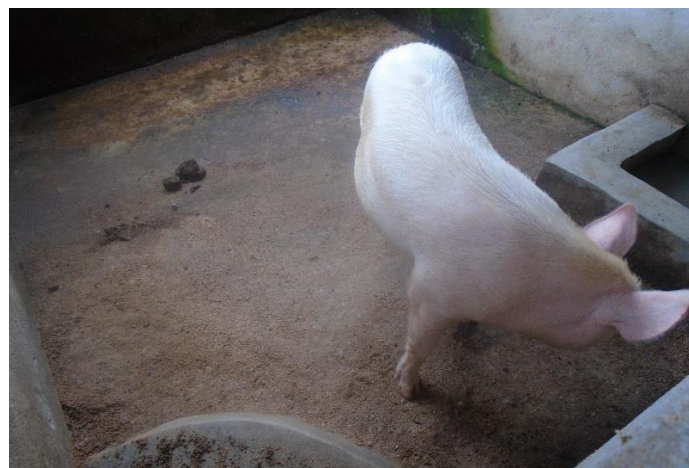
There are currently a total of 30 pigs in the pig pens in Yolowee and Gbobayee. In Gbobayee, one of the sows is pregnant.

| Community | No. of pigs |            |       |
|-----------|-------------|------------|-------|
|           | Piglets     | Adult pigs | Total |
| Gbobayee  | 6           | 6          | 12    |
| Yolowee   | 12          | 6          | 18    |
| Total     | 18          | 12         | 30    |

Furthermore, a piggery technician conducted on-site training for 26 pig caretakers. Proper feed mixture and timely feeding habits have contributed to good health and growth for the pigs.



Treating a pig in Gbobayee



A pig in a pen in Yolowee

The approximately four acres of Cassava and potato vines planted to supplement pig feed have matured and are now being used to feed the pigs. The papaya, however, will take a little more time until it is ready.



Cassava patch in Yolowee



Potato field in Gbobayee

### **Developing business plans**

Toward the development of business plans, data has been collected and is currently being analyzed.

(All photos by © Conservation International/Photo by Alison Miah)

**Note: Unauthorized copying of the images and text used here is prohibited.**